

AN ISO 9001 : 2008 CERTIFIED COMPANY

EXCEEDING EXPECTATIONS



QUALITY INNOVATIVE PERFECTION ECO



AeonLam -The ultimate in PreLam board is here and we are proud to present the best to the Deserving mankind.

We, with **AeonLam** are charged up to do our best to bring out world class quality products. Mankind needs to be in different atmosphere and environment. We come in, to give the

best environment friendly with our ultimate **AeonLam** quality superior **PreLam Particle Board and PreLam Medium Density Fibre Board and High Moisture Resistance Board**. We present you with 160+ shades and allowing of choice of patterns Manufactured in our company under utmost care to suit the modern day requirements in line with the trendy interiors!

“We make your presence pleasing” is indeed our motto and that’s what we are and will be offering to the mankind and Yes it is indeed a fact that we need the right environment and ambience which is nature’s gift to mankind.

We have a state of the art manufacturing unit in Chennai to manufacturer **PreLam Particle Board and Pre Lam MDF Board and PreLam HMR Board** Ranging in size from 2mm to 25mm consuming high quality Mother Board which are finely blended with high quality paper and comes out as a final product through fully automatic press (short cycle press) with a class finish of European Standard These Boards are manufactured keeping in mind to suit all your requirement and budget and it confirms all **ISI standards**

Customer base is the foundation for any business venture and we are proud to have a great Customer base with a network fairly wide which includes Government Departments, Public Sector Undertakings, Educational Institutions and Non-Government Organisation beside OEM’S and interior Firms. We believe that progress must be achieved in harmony with the environment concious.

A commitment to community welfare and environmental protection are an integral part of the corporate vision.



OUR TECHNOLOGY PROVIDES



Hassle free sourcing and inventory management.



Dimensional stability.



High Durability.



Conforming to BIS standards.



Excellent machinability.



Adherence to international standards.



High water and moisture resistance.



High screw holding capacity.



Resistance to Fungus.



Easy to clean and maintain.



High load bearing capacity.



Excellent acoustic properties.



High Abrasion resistance.



Saving of time and labour.



Matching Colour, design and finish is assured through our complete product range.

PRODUCTS



Plain Particle Board



Prelam Particle Boards



Plain MDF



Prelam MDF



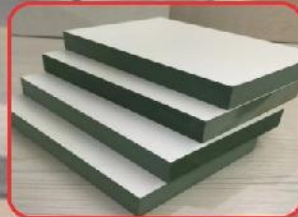
Plain HMR



Prelam HMR



Plain EXD-HMR



Prelam EXD-HMR

SHADES INDEX

| CODE | P.No | SHADE | 8x4 | 8x6 | 8x3 | 6x4 | 6x3 | 6x2.5 | CODE | P.No | SHADE | 8x4 | 8x6 | 8x3 | 6x4 | 6x3 | 6x2.5 | CODE | P.No | SHADE | 8x4 | 8x6 | 8x3 | 6x4 | 6x3 | 6x2.5 |
|---------|------|---------------|-----|-----|-----|-----|-----|-------|---------|------|-----------------------|-----|-----|-----|-----|-----|-------|---------|------|------------------------|-----|-----|-----|-----|-----|-------|
| EL 2101 | 2 | WHITE | ★ | ★ | ★ | ★ | ★ | ★ | EL 2210 | 5 | SATIN YELLOW | ★ | | | ★ | | | EL 2327 | 9 | ROYAL ZEBRANO | ★ | | | ★ | | |
| EL 2102 | 2 | FROSTY WHITE | ★ | ★ | ★ | ★ | ★ | ★ | EL 2211 | 5 | SATIN P. GREEN | ★ | | | ★ | | | EL 1328 | 9 | OXFORD CHERRY | ★ | ★ | ★ | ★ | | |
| EL 2103 | 2 | IVORY | ★ | ★ | ★ | ★ | ★ | ★ | EL 2301 | 7 | AGRO WOOD | ★ | | | ★ | | | EL 1329 | 10 | PADAUK | ★ | ★ | ★ | ★ | | |
| EL 2104 | 2 | SILVER GREY | ★ | ★ | ★ | ★ | ★ | ★ | EL 2302 | 7 | ASIAN MAPLE | ★ | | | ★ | | | EL 1330 | 10 | REGAL LARCH | ★ | | | ★ | | |
| EL 3106 | 2 | SLATE GREY | ★ | | | ★ | | | EL 2303 | 7 | DOUGLAS PINE | ★ | | | ★ | | | EL 2351 | 10 | ROLEX ASH (LIGHT) | ★ | | | ★ | | |
| EL 2107 | 2 | BLACK | ★ | | | ★ | | | EL 2304 | 7 | HIGHLAND PINE | ★ | ★ | ★ | ★ | | | EL 1331 | 10 | ROLEX ASH (DARK) | ★ | ★ | | ★ | | |
| EL 3109 | 2 | VIOLET | ★ | | | ★ | | | EL 2306 | 7 | MOLDAU ACASIA (LIGHT) | ★ | | | ★ | | | EL 1332 | 10 | ROSE WOOD | ★ | ★ | ★ | ★ | | |
| EL 3110 | 2 | ELECTRIC BLUE | ★ | | | ★ | | | EL 1307 | 7 | MOLDAU ACASIA (DARK) | ★ | ★ | | ★ | | | EL 2333 | 10 | ROYAL EBONY | ★ | | | ★ | | |
| EL 3111 | 2 | NAVY BLUE | ★ | | | ★ | | | EL 1308 | 7 | FLOWERY WENGE | ★ | ★ | ★ | ★ | | | EL 2335 | 10 | SWISS EBONY | ★ | | | ★ | | |
| EL 3112 | 3 | ORANGE | ★ | | | ★ | | | EL 1367 | 7 | FLOWERY WENGE (DARK) | ★ | ★ | ★ | ★ | | | EL 2336 | 10 | WHITE EBONY | ★ | | | ★ | | |
| EL 3113 | 3 | RED | ★ | | | ★ | | | EL 1309 | 7 | SL WENGE | ★ | ★ | ★ | ★ | | | EL 1337 | 10 | SAPELI | ★ | | | ★ | | |
| EL 3114 | 3 | ROSE RED | ★ | | | ★ | | | EL 1366 | 8 | SL WENGE (DARK) | ★ | | | ★ | | | EL 2347 | 11 | COUNTRY OAK (LIGHT) | ★ | | | ★ | | |
| EL 3115 | 3 | BARBIE PINK | ★ | | | ★ | | | EL 1310 | 8 | BRAVARIAN BEECH | ★ | ★ | ★ | ★ | ★ | ★ | EL 2338 | 11 | COUNTRY OAK (DARK) | ★ | | | ★ | | |
| EL 3116 | 3 | YELLOW | ★ | | | ★ | | | EL 2311 | 8 | COLONIAL BEECH | ★ | | | ★ | | | EL 1339 | 11 | BROWN OAK | ★ | | | ★ | | |
| EL 3117 | 3 | BLACK CURRENT | ★ | | | ★ | | | EL 2312 | 8 | INTALL BEECH | ★ | | | ★ | | | EL 2340 | 11 | WHITE OAK | ★ | | | ★ | | |
| EL 3118 | 3 | CHOCO BROWN | ★ | | | ★ | | | EL 2314 | 8 | WHITE BEECH | ★ | | | ★ | | | EL 2341 | 11 | FUMED SAWN OAK (LIGHT) | ★ | | | ★ | | |
| EL 3119 | 3 | PARROT GREEN | ★ | | | ★ | | | EL 1315 | 8 | AMERICAN WALNUT | ★ | ★ | | ★ | | | EL 2342 | 11 | FUMED SAWN OAK (DARK) | ★ | | | ★ | | |
| EL 3121 | 3 | HUNTER GREEN | ★ | | | ★ | | | EL 1316 | 8 | WALNUT | ★ | ★ | ★ | ★ | | | EL 2343 | 11 | SAWCUT VENEER (LIGHT) | ★ | | | ★ | | |
| EL 2201 | 4 | SATIN GOLD | ★ | | | ★ | | | EL 2317 | 8 | KHAYA MAHAGONY | ★ | ★ | | ★ | | | EL 2344 | 11 | SAWCUT VENEER (DARK) | ★ | | | ★ | | |
| EL 2202 | 4 | SATIN SILVER | ★ | | | ★ | | | EL 1318 | 8 | MAHAGONY | ★ | ★ | ★ | ★ | | | EL 1346 | 11 | EUROPEAN WALNUT | ★ | ★ | ★ | ★ | | |
| EL 2203 | 4 | SATIN BLACK | ★ | | | ★ | | | EL 2319 | 9 | BURMA TEAK | ★ | | | ★ | | | EL 1348 | 12 | COUCH WOOD | ★ | | | ★ | | |
| EL 2204 | 4 | SATIN IVORY | ★ | | | ★ | | | EL 2320 | 9 | SAWN THAI TEAK | ★ | | | ★ | | | EL 1349 | 12 | CANYON OAK | ★ | | | ★ | | |
| EL 2205 | 4 | SATIN BROWN | ★ | | | ★ | | | EL 2321 | 9 | SAWN INDIAN TEAK | ★ | | | ★ | | | EL 1350 | 12 | COLUMBIA WALNUT | ★ | | | ★ | | |
| EL 2206 | 4 | SATIN E. BLUE | ★ | | | ★ | | | EL 2322 | 9 | SAWN ROYAL TEAK | ★ | | | ★ | | | EL 1352 | 12 | SAPÉ WALNUT | ★ | | | ★ | | |
| EL 2207 | 4 | SATIN RED | ★ | | | ★ | | | EL 1323 | 9 | N.TEAK | ★ | ★ | ★ | ★ | ★ | ★ | EL 1353 | 12 | SWISS OAK | ★ | | | ★ | | |
| EL 2208 | 4 | SATIN B. PINK | ★ | | | ★ | | | EL 2324 | 9 | WOOD PLANK(LIGHT) | ★ | | | ★ | | | EL 1354 | 12 | INDIAN OAK | ★ | | | ★ | | |
| EL 2209 | 4 | SATIN ORANGE | ★ | | | ★ | | | EL 2325 | 9 | WOOD PLANK(DARK) | ★ | | | ★ | | | EL 2355 | 12 | SONOMA OAK (LIGHT) | ★ | | | ★ | | |

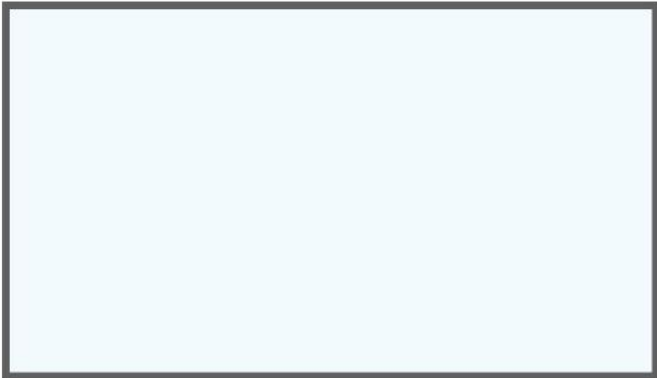
SHADES INDEX

| CODE | P.No | SHADE | 8x4 | 8x6 | 8x3 | 6x4 | 6x3 | 6x2.5 | CODE | P.No | SHADE | 8x4 | 8x6 | 8x3 | 6x4 | 6x3 | 6x2.5 | CODE | P.No | SHADE | 8x4 | 8x6 | 8x3 | 6x4 | 6x3 | 6x2.5 |
|---------|------|-----------------------|-----|-----|-----|-----|-----|-------|---------|------|--------------------|-----|-----|-----|-----|-----|-------|---------|------|------------------------|-----|-----|-----|-----|-----|-------|
| EL 2356 | 12 | SONOMA OAK (DARK) | ★ | | | ★ | | | EL 2519 | 17 | BLACK FABRIC | ★ | | | ★ | | | EL 2556 | 20 | AJANTA (LIGHT) | ★ | | | ★ | | |
| EL 2357 | 12 | THAI TEAK (LIGHT) | ★ | | | ★ | | | EL 2520 | 17 | GREY FABRIC | ★ | | | ★ | | | EL 1557 | 20 | AJANTA (DARK) | ★ | | | ★ | | |
| EL 1358 | 13 | THAI TEAK (DARK) | ★ | ★ | ★ | ★ | ★ | ★ | EL 2521 | 17 | BROWN FABRIC | ★ | | | ★ | | | EL 2558 | 20 | RED BLOSSOM | ★ | | | ★ | | |
| EL 2359 | 13 | WYOMING MAPLE (LIGHT) | ★ | | | ★ | | | EL 2522 | 17 | IVORY FABRIC | ★ | | | ★ | | | EL 2559 | 20 | PINK BLOSSOM | ★ | | | ★ | | |
| EL 1360 | 13 | WYOMING MAPLE (DARK) | ★ | | | ★ | | | EL 2524 | 17 | WHITE BARK | ★ | | | ★ | | | EL 2560 | 20 | BLUE BLOSSOM | ★ | | | ★ | | |
| EL 1361 | 13 | AMAZON WOOD | ★ | | | ★ | | | EL 2526 | 18 | BROWN BARK | ★ | | | ★ | | | EL 1561 | 21 | BLACK BLOSSOM | ★ | | | ★ | | |
| EL 1362 | 13 | MANGO WOOD | ★ | | | ★ | | | EL 2528 | 18 | BLACK HAZY FLOWER | ★ | | | ★ | | | EL 1562 | 21 | LIGHT MATT | ★ | | | ★ | | |
| EL 2363 | 13 | FOUR SEASONS (LIGHT) | ★ | | | ★ | | | EL 2529 | 18 | GREY HAZY FLOWER | ★ | | | ★ | | | EL 1563 | 21 | DARK MATT | ★ | | | ★ | | |
| EL 1364 | 13 | FOUR SEASONS (BROWN) | ★ | | | ★ | | | EL 2530 | 18 | BLUE HAZY FLOWER | ★ | | | ★ | | | EL 2564 | 21 | RED BUBBLES | ★ | | | ★ | | |
| EL 1365 | 13 | FOUR SEASONS (DARK) | ★ | | | ★ | | | EL 2531 | 18 | RED HAZY FLOWER | ★ | | | ★ | | | EL 2565 | 21 | BLUE BUBBLES | ★ | | | ★ | | |
| EL 1368 | 13 | FOREST TEAK (LIGHT) | ★ | | | ★ | | | EL 2532 | 18 | WINTER LEAVES | ★ | | | ★ | | | EL 2566 | 21 | GREEN BUBBLES | ★ | | | ★ | | |
| EL 1369 | 14 | FOREST TEAK (DARK) | ★ | | | ★ | | | EL 2533 | 18 | NIGHT LEAVES | ★ | | | ★ | | | EL 2567 | 21 | YELLOW BUBBLES | ★ | | | ★ | | |
| EL 1370 | 14 | SHISHAM WOOD (LIGHT) | ★ | | | ★ | | | EL 2534 | 18 | LIGHT AUTUMN LEAF | ★ | | | ★ | | | EL 2701 | 23 | LIGHT ALPINE ROCK | ★ | | | ★ | | |
| EL 1371 | 14 | SHISHAM WOOD (DARK) | ★ | | | ★ | | | EL 2535 | 18 | DARK AUTUMN LEAF | ★ | | | ★ | | | EL 2702 | 23 | DARK ALPINE ROCK | ★ | | | ★ | | |
| EL 1502 | 16 | BLACK STRIPE | ★ | | | ★ | | | EL 2536 | 19 | BAMBOO MAT | ★ | | | ★ | | | EL 2703 | 23 | GREY ALPINE ROCK | ★ | | | ★ | | |
| EL 1503 | 16 | BROWN STRIPE | ★ | | | ★ | | | EL 2540 | 19 | IVORY MESH | ★ | | | ★ | | | EL 2704 | 23 | PEARL MARBLE (IVORY) | ★ | | | ★ | | |
| EL 2504 | 16 | RED STRIPE | ★ | | | ★ | | | EL 2545 | 19 | LIGHT TILE | ★ | | | ★ | | | EL 2705 | 23 | PEARL MARBLE (WHITE) | ★ | | | ★ | | |
| EL 1506 | 16 | BROWN GRILL | ★ | | | ★ | | | EL 2546 | 19 | DARK TILE | ★ | | | ★ | | | EL 2706 | 23 | WHITE MARBLE | ★ | | | ★ | | |
| EL 2508 | 16 | METAL BLACK | ★ | | | ★ | | | EL 2547 | 19 | LIGHT RING | ★ | | | ★ | | | EL 2707 | 23 | BLACK MARBLE | ★ | | | ★ | | |
| EL 2510 | 16 | WHITE VERTICAL LINE | ★ | | | ★ | | | EL 2548 | 19 | DARK RING | ★ | | | ★ | | | EL 2708 | 23 | KALHARE MARBLE (LIGHT) | ★ | | | ★ | | |
| EL 2511 | 16 | BLACK VERTICAL LINE | ★ | | | ★ | | | EL 2549 | 19 | SAND CROSS LINE | ★ | | | ★ | | | EL 2709 | 23 | KALHARE MARBLE (DARK) | ★ | | | ★ | | |
| EL 2512 | 16 | GREY VERTICAL LINE | ★ | | | ★ | | | EL 1550 | 19 | CHOCO CROSS LINE | ★ | | | ★ | | | EL 2710 | 24 | TERAMO MARBLE (LIGHT) | ★ | | | ★ | | |
| EL 2513 | 16 | LIGHT CORKY | ★ | | | ★ | | | EL 2551 | 19 | GREY LINEN FABRIC | ★ | | | ★ | | | EL 2711 | 24 | TERAMO MARBLE (DARK) | ★ | | | ★ | | |
| EL 2514 | 17 | DARK CORKY | ★ | | | ★ | | | EL 2552 | 20 | BROWN LINEN FABRIC | ★ | | | ★ | | | EL 2712 | 24 | TERAMO MARBLE (GREY) | ★ | | | ★ | | |
| EL 2515 | 17 | BLACK DIAMOND | ★ | | | ★ | | | EL 2553 | 20 | IVORY LINEN FABRIC | ★ | | | ★ | | | EL 1713 | 24 | TERAMO MARBLE (BROWN) | ★ | | | ★ | | |
| EL 2517 | 17 | BROWN DIAMOND | ★ | | | ★ | | | EL 2554 | 20 | AEROPLANK (LIGHT) | ★ | | | ★ | | | | | | | | | | | |
| EL 2518 | 17 | IVORY DIAMOND | ★ | | | ★ | | | EL 1555 | 20 | AEROPLANK (DARK) | ★ | | | ★ | | | | | | | | | | | |





Solid Colours



EL 2101 WHITE



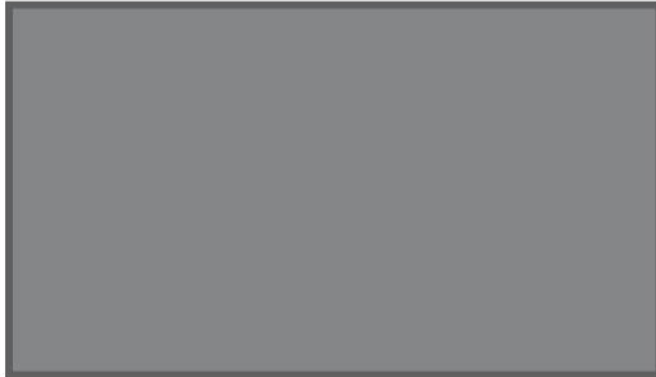
EL 2102 FROSTYWHITE



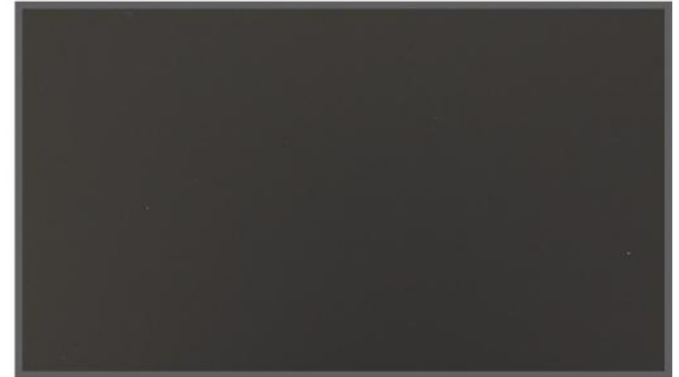
EL 2103 IVORY



EL 2104 SILVER GREY



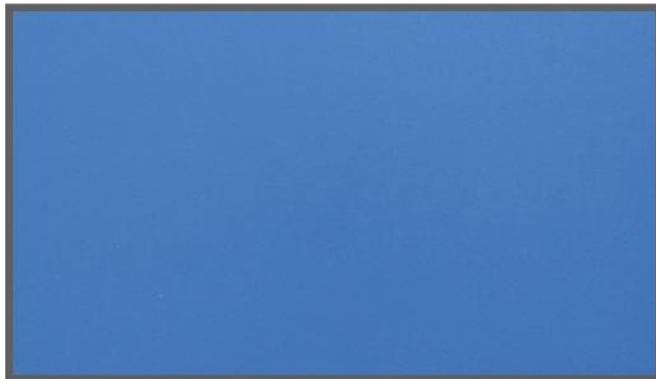
EL 3106 SLATE GREY



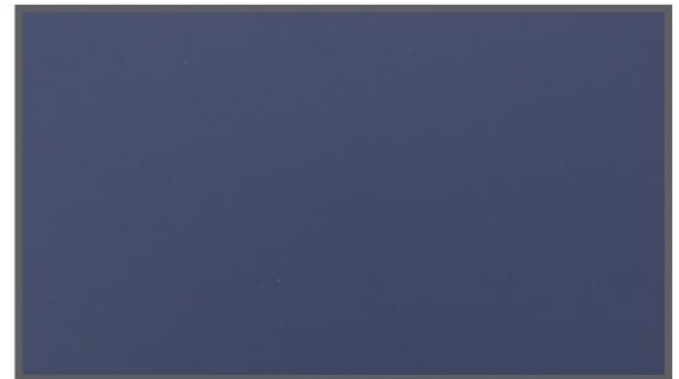
EL 2107 BLACK



EL 3109 VIOLET



EL 3110 ELECTRIC BLUE



EL 3111 NAVY BLUE



EL 3112 ORANGE



EL 3113 RED



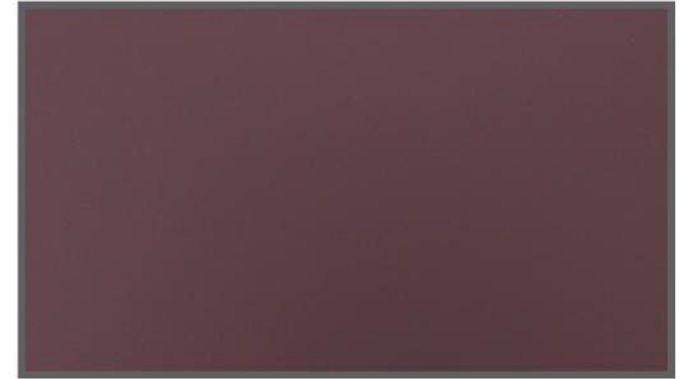
EL 3114 ROSE RED



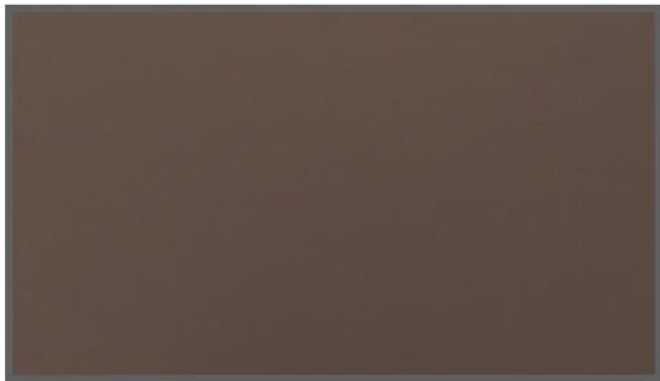
EL 3115 BARBIE PINK



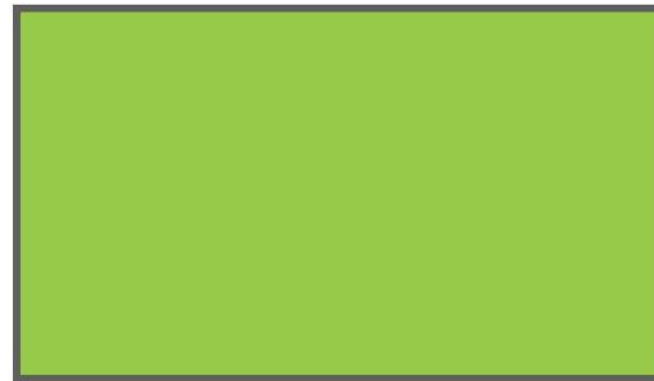
EL 3116 YELLOW



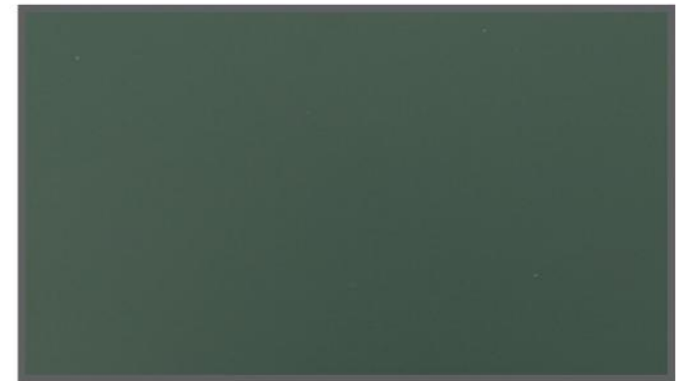
EL 3117 BLACK CURRENT



EL 3118 CHOCO BROWN



EL 3119 PARROT GREEN



EL 3121 HUNTER GREEN



EL 2201 SATIN GOLD



EL 2202 SATIN SILVER



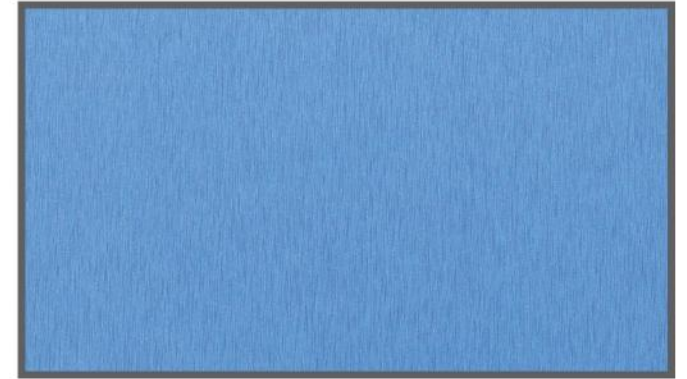
EL 2203 SATIN BLACK



EL 2204 SATIN IVORY



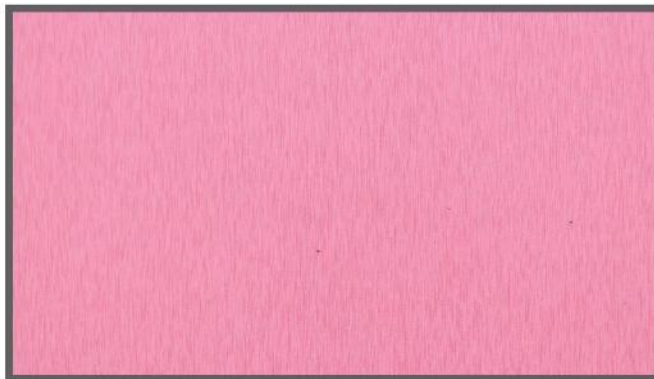
EL 2205 SATIN BROWN



EL 2206 SATIN ELECTRIC BLUE



EL 2207 SATIN RED



EL 2208 SATIN BARBIE PINK



EL 2209 SATIN ORANGE



EL 2210 SATIN YELLOW



EL 2211 SATIN PARROT GREEN



Natural Wood Grains



EL 2301 AGRO WOOD



EL 2302 ASIAN MAPLE



EL 2303 DOUGLAS PINE



EL 2304 HIGHLAND PINE



EL 2306 MOLDAU ACASIA (LIGHT)



EL 1307 MOLDAU ACASIA (DARK)



EL 1308 FLOWERY WENGE



EL 1367 FLOWERY WENGE (DARK) NEW



EL 1309 SL WENGE



EL 1366 SL WENGE (DARK) **NEW**



EL 1310 BAVARIAN BEECH



EL 2311 COLONIAL BEECH



EL 2312 INTALL BEECH



EL 2314 WHITE BEECH



EL 1315 AMERICAN WALNUT



EL 1316 WALNUT



EL 2317 KHAYA MAHAGONY



EL 1318 MAHAGONY



EL 2319 BURMA TEAK



EL 2320 SAWN THAI TEAK



EL 2321 SAWN INDIAN TEAK



EL 2322 SAWN ROYAL TEAK



EL 1323 N. TEAK



EL 2324 WOOD PLANK (LIGHT)



EL 2325 WOOD PLANK (DARK)



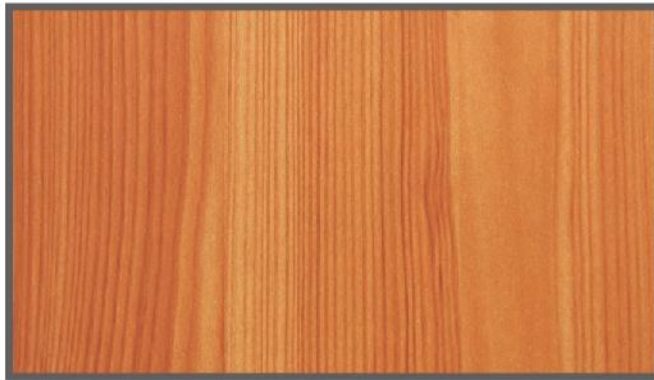
EL 2327 ROYAL ZEBRANO



EL 1328 OXFORD CHERRY



EL 1329 PADAUK



EL 1330 REGAL LARCH



EL 2351 ROLEX ASH (LIGHT) NEW



EL 1331 ROLEX ASH (DARK)



EL 1332 ROSE WOOD



EL 2333 ROYAL EBONY



EL 2335 SWISS EBONY



EL 2336 WHITE EBONY



EL 1337 SAPELI



EL 2347 COUNTRY OAK (LIGHT) **NEW**



EL 2338 COUNTRY OAK (DARK)



EL 1339 BROWN OAK



EL 2340 WHITE OAK



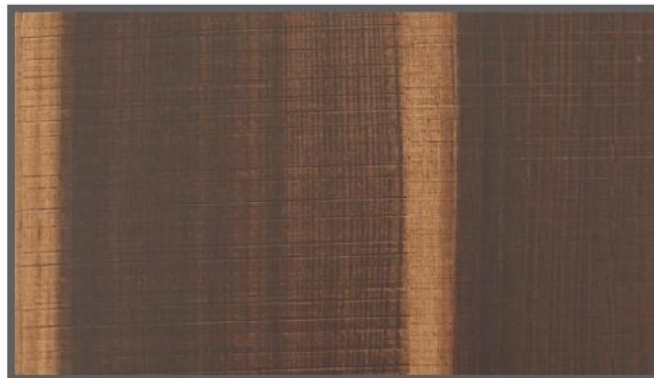
EL 2341 FUMED SAWN OAK (LIGHT)



EL 2342 FUMED SAWN OAK (DARK)



EL 2343 SAWCUT VENEER (LIGHT)



EL 2344 SAWCUT VENEER (DARK)



EL 1346 EUROPEAN WALNUT



EL 1348 COUCHWOOD **NEW**



EL 1349 CANYON OAK **NEW**



EL 1350 COLUMBIA WALNUT **NEW**



EL 1352 SAPE WALNUT **NEW**



EL 1353 SWISS OAK **NEW**



EL 1354 INDIAN OAK **NEW**



EL 2355 SONOMA OAK (LIGHT) **NEW**



EL 2356 SONOMA OAK (DARK) **NEW**



EL 2357 THAI TEAK (LIGHT) **NEW**



EL 1358 THAITEAK (DARK) **NEW**



EL 2359 WYOMING MAPLE (LIGHT) **NEW**



EL 1360 WYOMING MAPLE (DARK) **NEW**



EL 1361 AMAZON WOOD **NEW**



EL 1362 MANGO WOOD **NEW**



EL 2363 FOUR SEASONS (LIGHT) **NEW**



EL 1364 FOUR SEASONS (BROWN) **NEW**



EL 1365 FOUR SEASONS (DARK) **NEW**



EL 1368 FORESTTEAK (LIGHT) **NEW**



EL 1369 FORESTTEAK (DARK) **NEW**



EL 1370 SHISHAM WOOD (LIGHT) **NEW**



EL 1371 SHISHAM WOOD (DARK) **NEW**



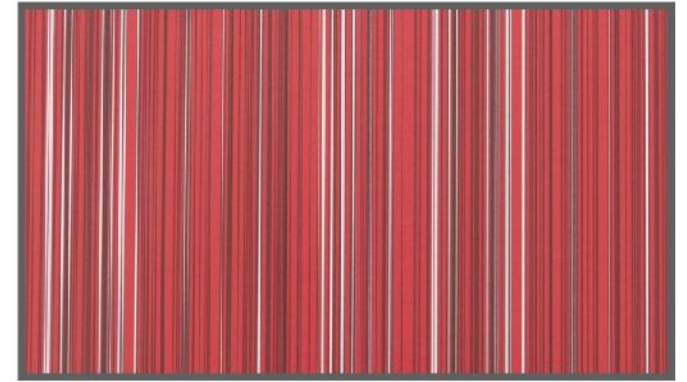
Fancy Design



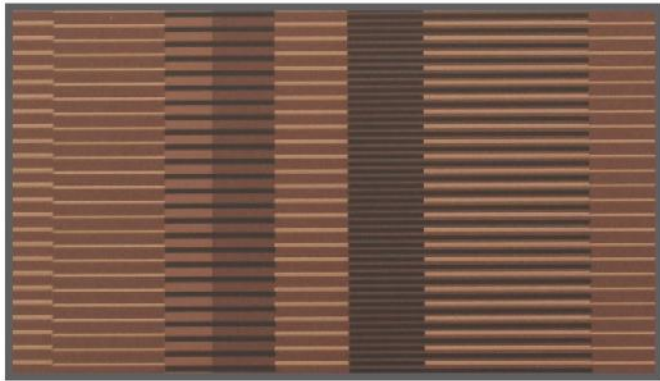
EL 1502 BLACK STRIPE



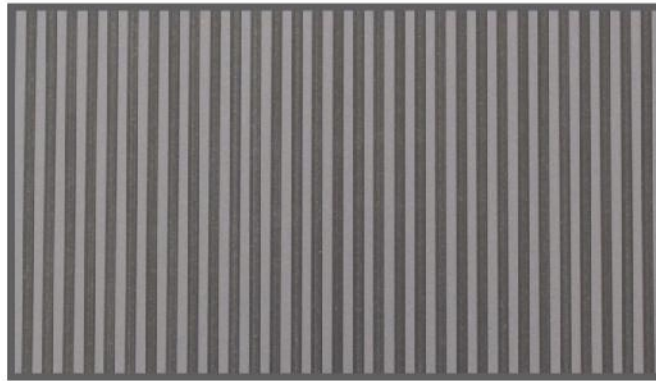
EL 1503 BROWN STRIPE



EL 2504 RED STRIPE



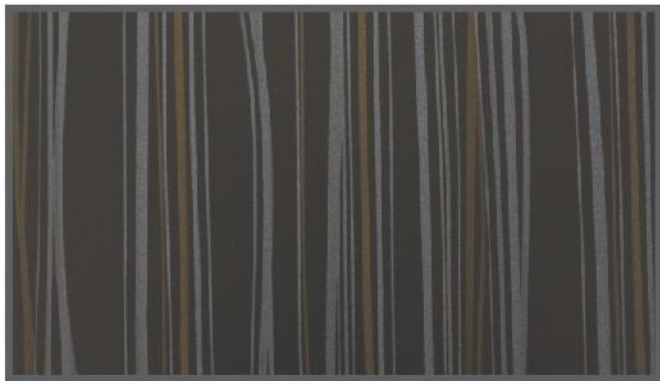
EL 1506 BROWN GRILL



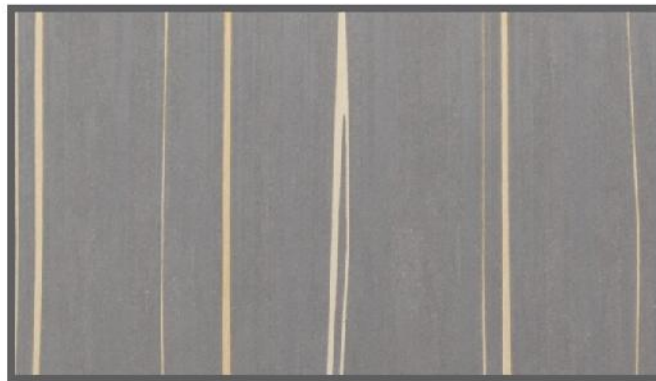
EL 2508 METAL BLACK



EL 2510 WHITE VERTICAL LINE



EL 2511 BLACK VERTICAL LINE



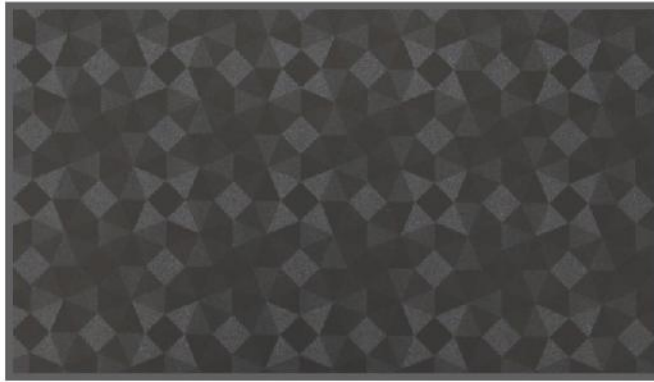
EL 2512 GREY VERTICAL LINE



EL 2513 LIGHT CORKY



EL 2514 DARK CORKY



EL 2515 BLACK DIAMOND



EL 2517 BROWN DIAMOND



EL 2518 IVORY DIAMOND



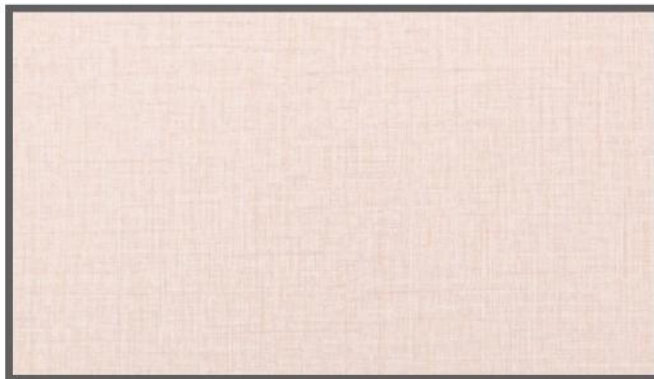
EL 2519 BLACK FABRIC



EL 2520 GREY FABRIC



EL 2521 BROWN FABRIC



EL 2522 IVORY FABRIC



EL 2524 WHITE BARK



EL 2526 BROWN BARK



EL 2528 BLACK HAZY FLOWER



EL 2529 GREY HAZY FLOWER



EL 2530 BLUE HAZY FLOWER



EL 2531 RED HAZY FLOWER



EL 2532 WINTER LEAVES



EL 2533 NIGHT LEAVES



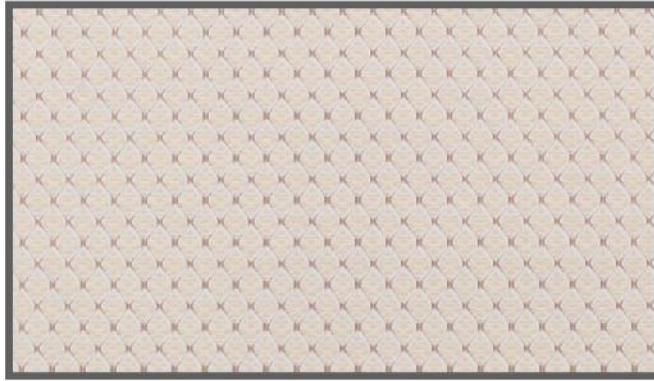
EL 2534 LIGHT AUTUMN LEAF



EL 2535 DARK AUTUMN LEAF



EL 2536 BAMBOO MAT



EL 2540 IVORY MESH



EL 2545 LIGHT TILE



EL 2546 DARK TILE



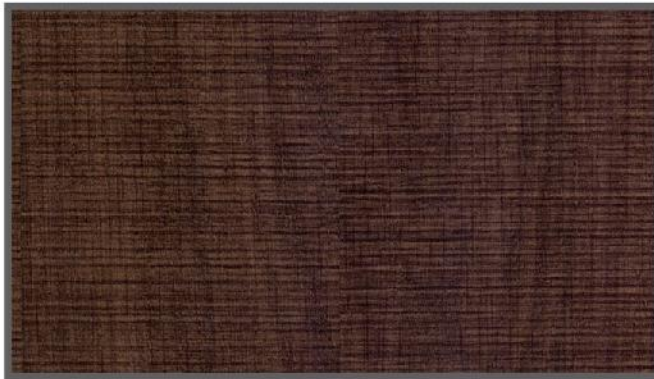
EL 2547 LIGHT RING



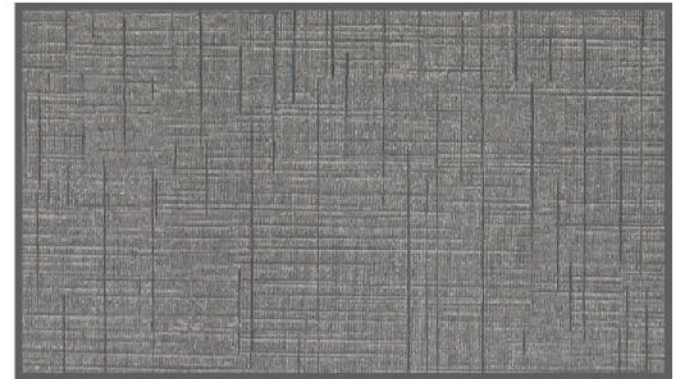
EL 2548 DARK RING



EL 2549 SAND CROSS LINE **NEW**



EL 1550 CHOCO CROSS LINE **NEW**



EL 2551 GREY LINEN FABRIC **NEW**



EL 2552 BROWN LINEN FABRIC **NEW**



EL 2553 IVORY LINEN FABRIC **NEW**



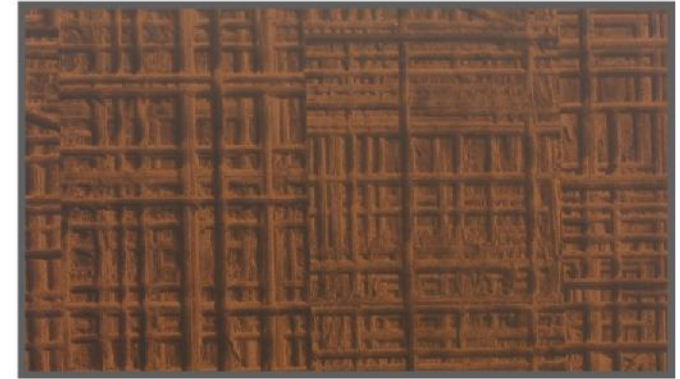
EL 2554 AEROPLANK (LIGHT) **NEW**



EL 1555 AEROPLANK (DARK) **NEW**



EL 2556 AJANTA (LIGHT) **NEW**



EL 1557 AJANTA (DARK) **NEW**



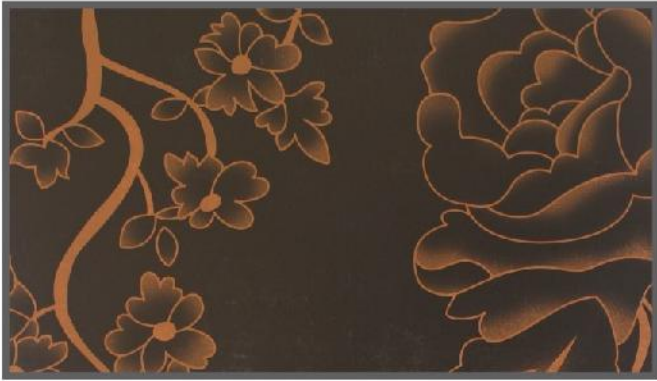
EL 2558 RED BLOSSOM **NEW**



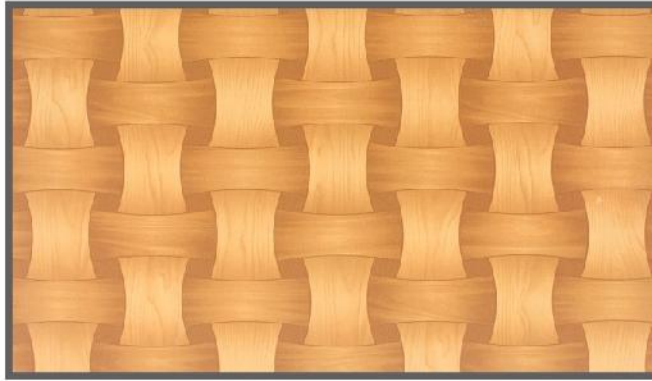
EL 2559 PINK BLOSSOM **NEW**



EL 2560 BLUE BLOSSOM **NEW**



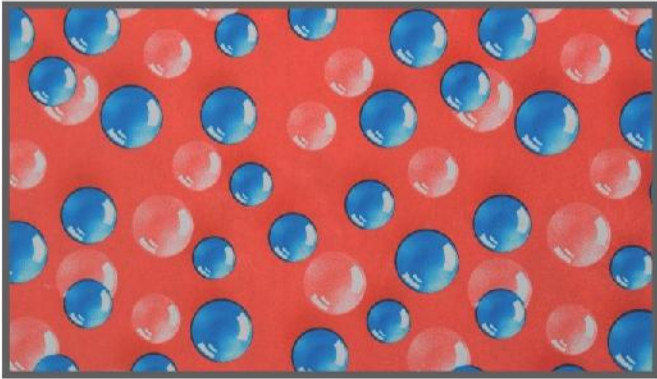
EL 1561 BLACK BLOSSOM **NEW**



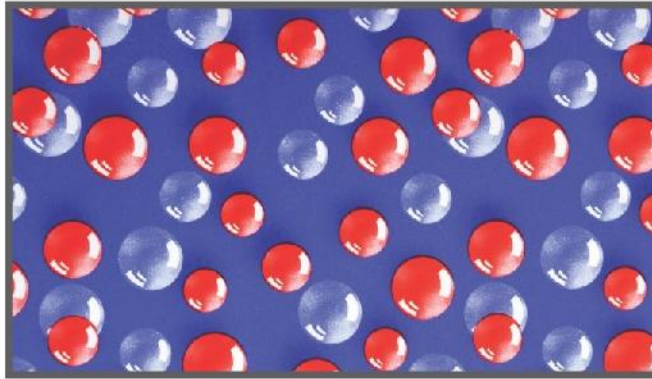
EL 1562 LIGHT MATT **NEW**



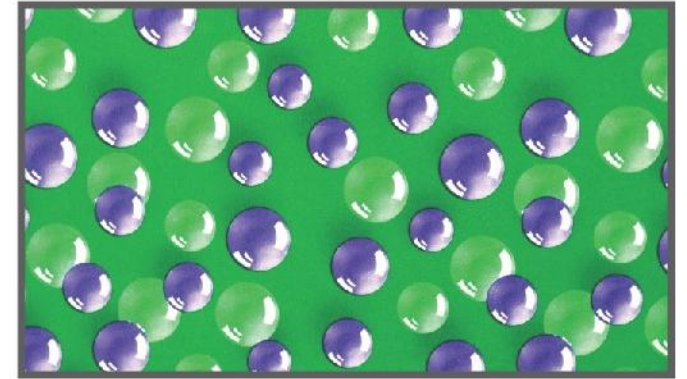
EL 1563 DARK MATT **NEW**



EL 2564 RED BUBBLES **NEW**



EL 2565 BLUE BUBBLES **NEW**



EL 2566 GREEN BUBBLES **NEW**



EL 2567 YELLOW BUBBLES **NEW**

Stones & Marble





EL 2701 LIGHT ALPINE ROCK **NEW**



EL 2702 DARK ALPINE ROCK **NEW**



EL 2703 GREY ALPINE ROCK **NEW**



EL 2704 PEARL MARBLE (IVORY) **NEW**



EL 2705 PEARL MARBLE (WHITE) **NEW**



EL 2706 WHITE MARBLE **NEW**



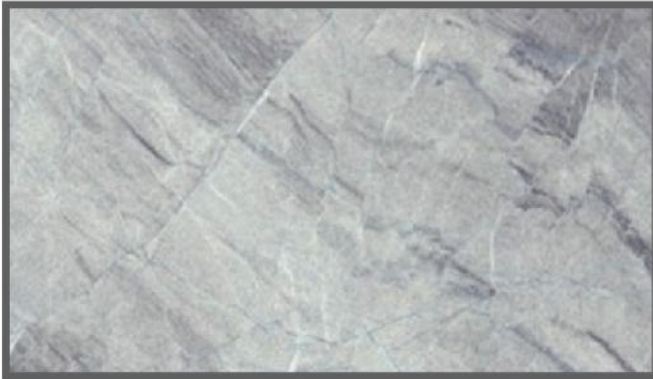
EL 2707 BLACK MARBLE **NEW**



EL 2708 KALHARE MARBLE (LIGHT) **NEW**



EL 2709 KALHARE MARBLE (DARK) **NEW**



EL 2710 TERAMO MARBLE (LIGHT) **NEW**



EL 2711 TERAMO MARBLE (DARK) **NEW**



EL 2712 TERAMO MARBLE (GREY) **NEW**



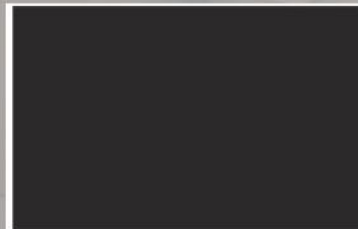
EL 1713 TERAMO MARBLE (BROWN) **NEW**



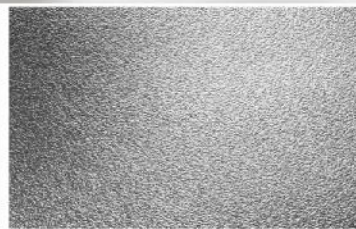
Available Shades - 160+

| Available | SIZES | THICKNESS(MM) |
|-----------------|---|---|
| Particle Board | 8 x 6, 8 x 4, 8 x 3, 6 x 4, 6 x 3, 6 x 2.5, 6 x 2 | 9, 11, 15, 17, 18, 25 |
| MDF Board | 8 x 6, 8 x 4, 8 x 3, 6 x 4, 6 x 3, 6 x 2.5, 6 x 2 | 2, 3.3, 4, 4.3, 5.2, 7.3, 9.7, 10.5, 14.5, 16.5, 18, 25 |
| HMR Board | 8 x 4 | 3.3, 5.5, 7.5, 11, 16.5 |
| EXD - HMR Board | 8 x 4 | 8, 11, 16, 17, 18 |

Finish Available



MATT



SUEDE



**TEXTURE 1
(BOX)**



**TEXTURE 2
(WOOD)**



**TEXTURE 3
(LINES)**

Dealer / Distributor:

